



WaAe

MYEIK ARCHIPELAGO, MYANMAR

# FACT SHEET

2020-2021





## WA ALE - A LUXURY ADVENTURE RETREAT



*Wa Ale is a privately owned eco-tourism project on the 5,000-acre island of Wa Ale located in the Lampi Marine National Park in the Myeik Archipelago*

This intimate and luxurious island retreat sits in a beautiful protected cove, overlooking a pristine beach and majestic rock formations. Here guests are invited to experience the natural beauty of the Myeik Archipelago in a luxury haven that encourages responsible and sustainable care for the environment.









## PHILOSOPHY

Wa Ale's philosophy is to emphasize conservation and to be committed to giving back to the surrounding environment and local communities. Wa Ale is constructed from reclaimed materials and practices alternative sources of energy for power. A percentage of profits from eco-tourism is designated for various conservation efforts in the Lampi Marine National Park including Sea Turtle Conservation and Coral Protection as well as charitable donations to education and medical programs for the local community.

## AT A GLANCE

- Wa Ale is a luxury retreat on the 5,000-acre island of Wa Ale located in the Lampi Marine National Park, a designated ASEAN Marine Heritage Park, in Southern Myanmar.
- Situated in the Andaman Sea off the southern tip of Myanmar.
- 55 nautical miles from the town of Kawthaung on the main-land of Southern Myanmar near the Thai border.
- The terrain is a scenic rocky coastline with beautiful white sand beaches with bays and inlets surrounded by lush evergreen and mangrove forests.
- Luxury private accommodations on a one kilometre white sand beach with eleven Tented Beach Villas, three Treetop Villas plus four Beach Houses on the private Honeymoon Beach.
- Wa Ale can be accessed by several airlines from Yangon and Bangkok.
- Upon arrival to Kawthaung Jetty, guests will embark on an approximately 1 hour 40 minutes luxury speed boat transfer to Wa Ale.





## LOCATION

The Myeik Archipelago is a beautiful cluster of 800 islands located off the southernmost tip of Myanmar, close to the Thai border. The entry point to the Myeik Archipelago is the small city of Kawthaung, which is 55 nautical miles to the island of Wa Ale.

The Archipelago offers great opportunities for exploration and diving amongst spectacular marine life and untouched coral reefs. The islands and the surrounding waters of the Andaman Sea have become a popular unexplored diving destination. The region is also a fascinating place to visit culturally.

## GETTING THERE

**FROM PHUKET, THAILAND** Take a 3½ hour car ride to Ranong, Thailand followed by a short boat ride across the border to Kawthaung, Myanmar. From the Kawthaung Jetty, embark on a 1 hour and 40 minutes journey on a luxury speed boat or 11 meter RIB to the island.

**FROM BANGKOK, THAILAND** Take a 1 hour flight to Ranong, Thailand followed by a short boat ride across the border to Kawthaung, Myanmar. From the Kawthaung Jetty, embark on a 1 hour and 40 minute journey on a luxury speed boat or 11 meter RIB to the island.

**FROM YANGON, MYANMAR** Take a 1½ hour flight to Kawthaung, Myanmar. From the Kawthaung Jetty, take a 1 hour and 40 minute journey on a luxury speed boat or 11 meter RIB to the island.

The entrance to Wa Ale is a protected mangrove forest, we will help our guests disembark onto a handmade rock pathway that leads to an idyllic short walk to our Main Pavilion. Wa Ale will arrange all transportation for guests from Kawthaung and Ranong Airports to the resort.

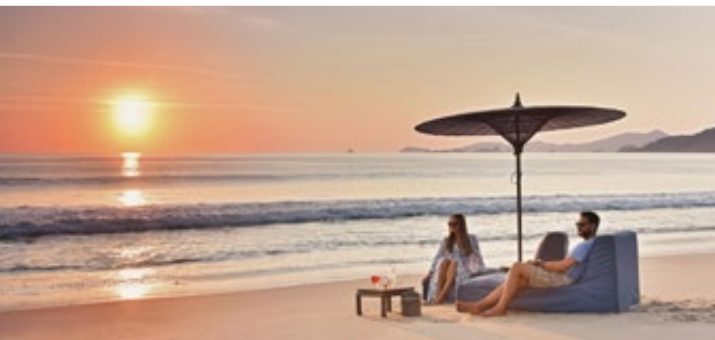




## THE BEACHES OF WA ALE

**TURTLE BEACH** - Wa Ale is located on this beach, which is a protected nesting area where sea turtles lay their eggs between October and May each year. This beach is where you'll find Wa Ale's intimate Tented Beach Villas.

**HONEYMOON BEACH** - This is another spectacular beach around a rock formation neighboring Turtle Beach. Just under one kilometer, this white sand beach has clear, calm waters and it is where Wa Ale's private Beach House and Beach Bungalows are located.



## WEATHER

Myeik Archipelago's climate is dominated by the annual monsoon cycle with two main seasons: a dry and a rainy season with an average annual temperature of 27°C.

**October:** The tail end of the monsoon season, it can rain occasionally.

**November – March:** Mostly clear skies and calm winds.

**April:** The warmest month but beautiful weather.

**May:** Beginning of the monsoon season, it can rain occasionally.

WA ALE IS CLOSED  
JUNE 1ST - SEPTEMBER 30TH



# WA ALE MAP



NOT TO SCALE

[VIEW LARGER MAP](#)

[VIEW HONEYMOON BEACH MAP](#)





## WA ALE'S FACILITIES AT A GLANCE

- Main Pavilion Beach Restaurant & Bar
- River Café & Bar
- Dive Center
- Exercise Pavilion
- Open Air Activity Center
- Turtle Sanctuary & Island Conservation Center



## DINING

The Main Pavilion Restaurant & Bar serves three delicious meals a day and accommodates up to 28 guests, while the casual outdoor dining at River Café & Bar serves light fare and drinks daily and BBQ dinners on select evenings during the week.

These two on-site restaurants serve a healthy blend of Asian and Mediterranean inspired dishes using organic produce from the chef's organic gardens as well as the 10 acre Wa Ale organic farm on Honeymoon Beach. Sustainable fresh seafood comes from the Wa Ale mariculture program. Creative and personalized menus change daily for guests to savor the freshest flavors from the kitchen.









## ACCOMMODATION

Custom designed to blend into the lush tropical beach environment, each of the villas and the Beach Houses are built to leave a minimal green footprint. The eleven private luxury Tented Beach Villas, three Treetop Villas and the four Beach Houses have been constructed using locally reclaimed materials, while creating the ultimate in comfort and design.

## CONSERVATION & SUSTAINABILITY

Wa Ale is an eco-friendly retreat that believes in maintaining a sustainable environment. Therefore we ask our guest to be sensitive to excessive energy usage in the villas.

### WE OFFER:

- Wifi in Main Pavilion, Villas and River Café
- Luxury biodegradable amenities
- Mosquito nets
- Daily tea and coffee service for Villas
- Safe deposit box in office
- Laundry service available to guests with stays over 4 nights

### WE DO NOT OFFER:

- Air conditioners
- Hairdryers
- Mini-Bar
- Telephone
- Shaver outlet





## TENTED BEACH VILLAS

The eleven beautifully designed family sized Tented Beach Villas have unobstructed ocean views with two state of the art ceiling fans, for maximum cross ventilation. The villas can accommodate up to four guests: two adults + two children (ages 8-17).

### AT A GLANCE

- 220m<sup>2</sup> villas
- One bedroom with king size canopy bed
- Generous size living area
- A sofa with option to change into two single beds
- Rear deck with large lounge area with unobstructed ocean views
- Large front deck with seating facing jungle flora
- En suite bathroom with double vanity sinks and outdoor shower (no bathtub) in a private enclosed garden











## TREETOP VILLAS

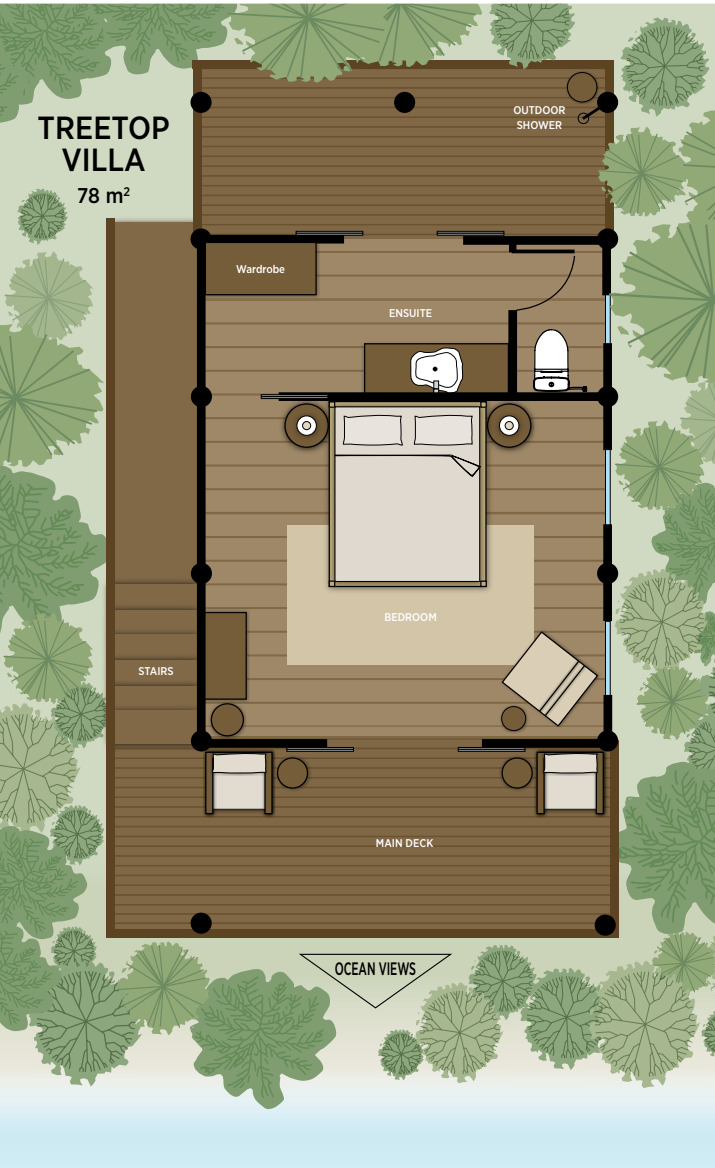
These three Villas are set amidst a canopy of trees with ocean views and a wonderful breeze. Beautifully appointed, these villas can comfortably accommodate two guests.

### AT A GLANCE

- 78 m<sup>2</sup> suites
- One bedroom with King bed
- Constructed with reclaimed wood
- En suite indoor bathroom with outdoor shower
- Spacious balcony in the canopy of trees
- State of the art fan



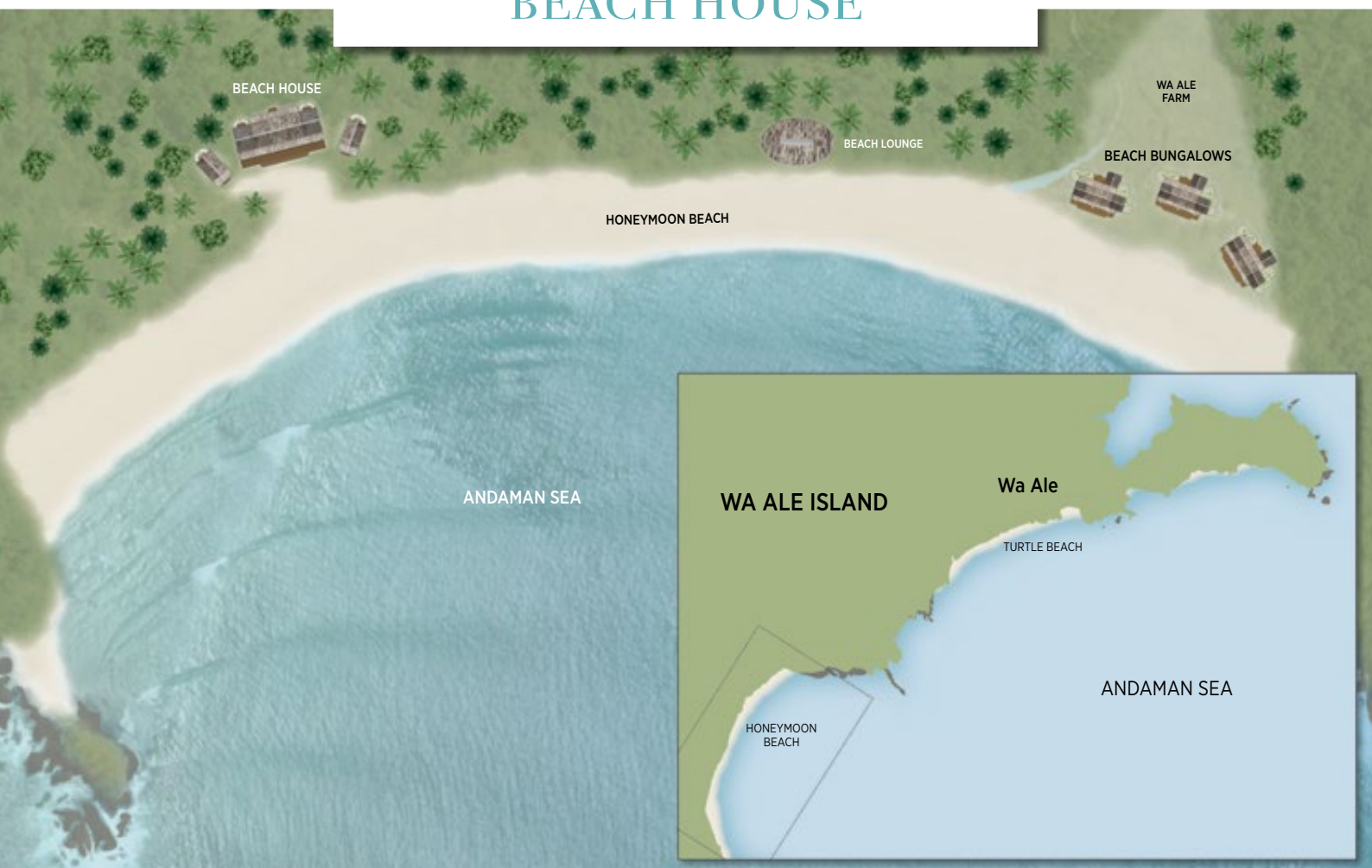








## BEACH HOUSE







## THE BEACH HOUSE

The Beach House is a private oasis of stylish living set in a secluded bay on the beautiful 1 km stretch of Honeymoon Beach, a 10-minute boat ride to Wa Ale Resort's Turtle Beach.

Backed by an indigenous forest, this four bedroom retreat offers magnificent uninterrupted ocean views and is ideal for a reunion of family and friends.

The ultimate in beach exclusivity, the Beach House has a private butler, housekeeping staff and customized gourmet private in-house dining. This tranquil retreat features a large living and dining area with a spacious deck for outdoor entertaining. There are three king bedroom suites and 1 additional bedroom with 2 queen bunk beds, all with ensuite outdoor garden showers.

Guests of the Beach House are invited to enjoy drinks at Wa Ale's relaxing Beach Lounge a short stroll down the beach or exercise at the hill-top jungle gym and Wa Ale's organic farm. Private in-house massages are available to our Beach House guests.

### AT A GLANCE

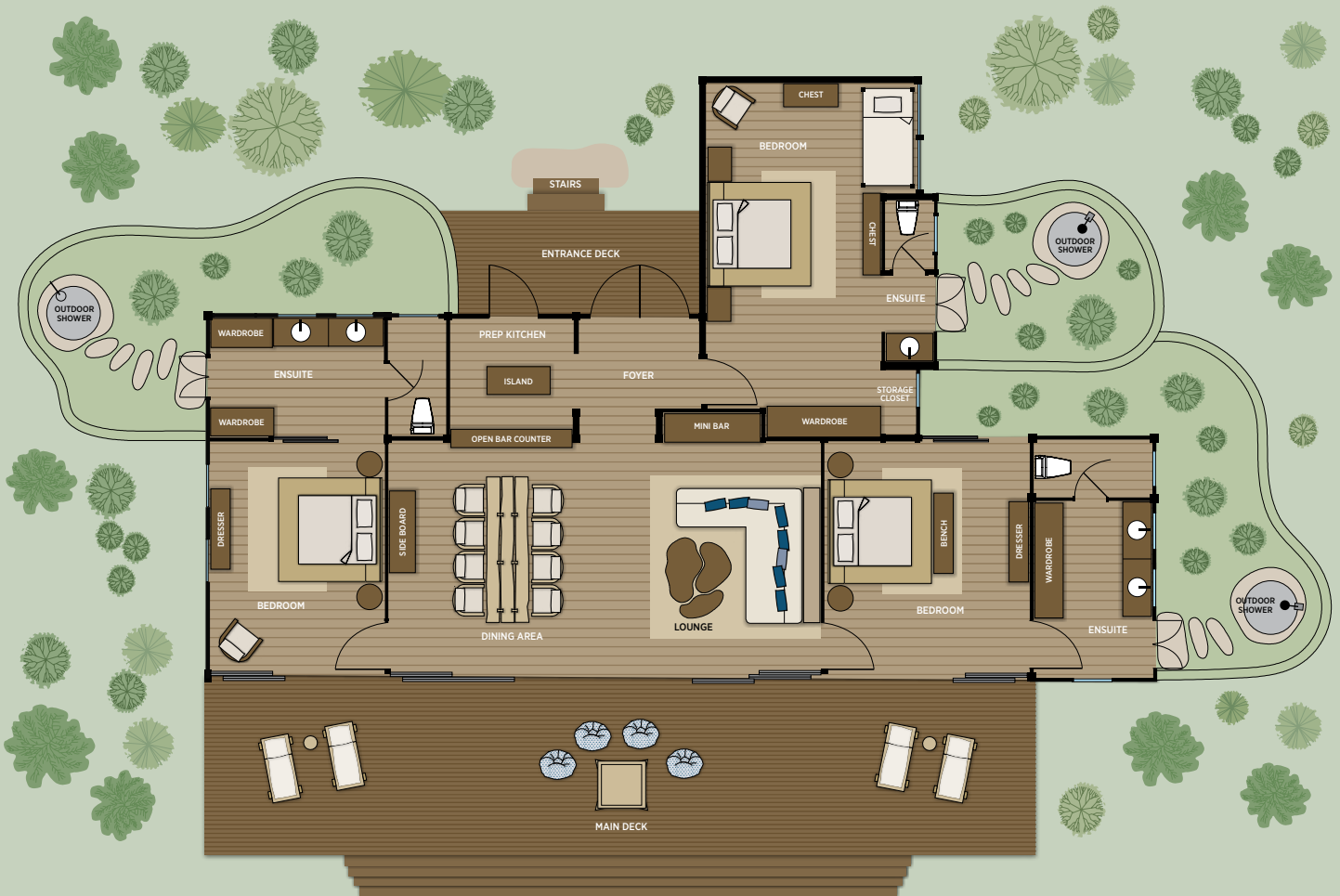
- Exclusive 700m<sup>2</sup> retreat with large living room, bar, dining area with en-suite 3 king bedroom suites and a 4th bedroom with 2 queen bunk beds
- Spacious open-air home set on a quiet beach with beautiful sea views
- Customized gourmet family-style meals served in the privacy of the beach home
- Private butler and housekeeping staff
- Access to Wa Ale Resort's Dive Center and dive trips
- Use of kayaks, paddleboards and boat transport for excursions





**FOUR-BEDROOM BEACH HOUSE**  
MAIN HOUSE - 520 m<sup>2</sup> / EXTERNAL BEDROOMS - 90 m<sup>2</sup>





**THREE-BEDROOM BEACH BUNGALOW**  
250 m<sup>2</sup>

## BEACH BUNGALOWS

These three spacious private beach bungalows are located half a kilometer from the Beach House on Honeymoon Beach, a 10-minute boat ride to Wa Ale Resort's Turtle Beach.

Nestled near Wa Ale's lush organic farm with spacious decks spilling on to a wide white sand beach, the private bungalows are the ultimate in bohemian chic with 2 luxury king bedrooms and another large well-appointed bedroom with a king bed and additional bunk bed for two.

Guests of the beach bungalows are invited to enjoy drinks at Wa Ale's relaxing Beach Lounge a short stroll down the beach or exercise at the hill-top jungle gym. Private in-house massages are available to all our Beach Bungalow guests.

### AT A GLANCE

- Three exclusive 250m<sup>2</sup> houses with large living/dining area and en-suite 2 king bedroom suites and a 3rd bedroom with 1 King Bed and bunk bed for two with outdoor showers
- Each well-appointed bungalow is nestled near Wa Ale's organic farm facing a quiet beach with beautiful sea views
- Customized gourmet family-style meals served in the privacy of each beach bungalow
- Private butler and housekeeping staff
- Access to Wa Ale Resort's Dive Center and dive trips
- Use of kayaks, paddleboards and boat transport for excursions





## ACTIVITIES

Wa Ale is the ideal escape tailored for the adventure traveler with a love of exploring uncharted aquatic and jungle habitats. Offering a wide variety of sights and adventurous activities, from trekking through tropical forests and diving spectacular reefs to kayaking through mangroves; the opportunities for exploration are almost limitless. All Wa Ale's activities include a private guide and can be done exclusively. However diving is done in groups.

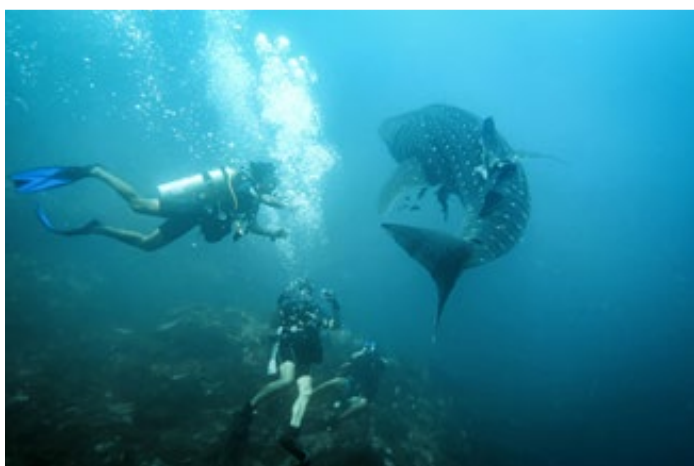
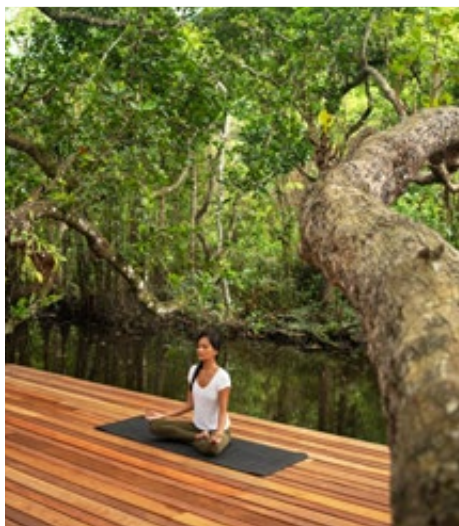
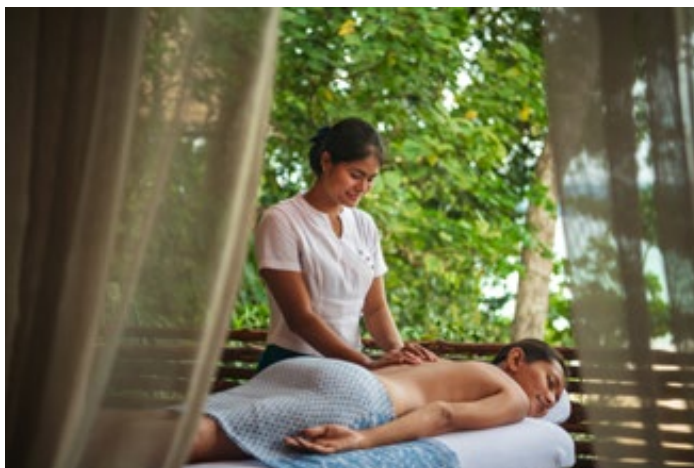
If you prefer a more relaxed stay, enjoy a walk along one of the quiet white sand beaches or take a leisurely swim in the warm azure waters of Wa Ale's protected bay.

### ACTIVITIES AT A GLANCE

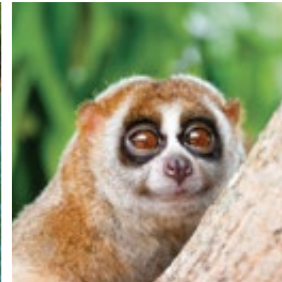
- Snorkel and dive the archipelago's abundant reefs and caves.
- Kayak and paddle board through Wa Ale's pristine river and mangrove forests.
- Trek Wa Ale's jungle trails and view the unique flora and fauna indigenous to the island.
- Explore the exotic marine life and island hopping in the Lampi Marine National Park.
- Learn about the local "Moken" fishing community and turtle conservation on Wa Ale and ways to protect this special region.
- Relax after a day of activities with a private massage in your Villa.









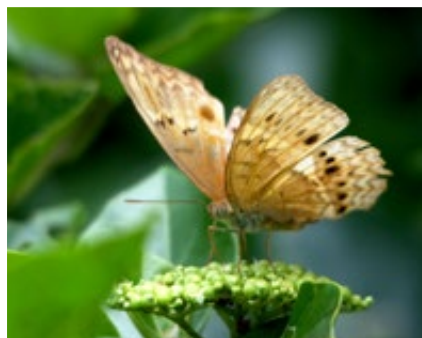


## WILDLIFE

Lampi Marine National Park offers a diverse range of wildlife. Wa Ale is home to a multitude of indigenous land animals with 20 different mammal species and over 200 bird species. Mammals include, civet and forest cats, mouse deer, slow loris, three different monkey species and the near extinct pangolin.

Up in the air, the colorful diversity is perhaps even greater: there are hornbills unique only to the archipelago, white-bellied sea eagles, while kites, kingfishers, eastern reef herons, emerald doves, to name but a few of the species that circle the island.

The Myeik Archipelago waters showcase an incredible variety of marine life, including: whale sharks, dolphins, as well as eagle and manta rays, frogfish, ribbon eels and ghost pipefish, while the reefs are teeming with an abundance of tropical fish species.







## NEW AT WA ALE

1500 fish **MARICULTURE FARM** (aquaculture in the open sea). This sustainable mariculture will feed guests and staff organic local fish throughout the season. Wa Ale does not purchase from illegal fishing vessels.

Large **ORGANIC FARM** of 5 greenhouses to support most of the island's produce. Guests are invited to visit the gardens and mariculture area.

New **CONSERVATION CENTER** and observation deck nestled in the jungle, is a great place to view birdlife in their natural habitat.

Two new world class **DIVE SITES**, including the famous Burma Banks. Explore Black Rock and Burma Banks and still be home for dinner. These sites are only occasionally visited by liveboard dive boats.

New private four bedroom **BEACH HOUSE** and three, 3 bedroom **BEACH BUNGALOWS** on the 1km long Honeymoon Beach. *Read more under accommodation.*







## OUR PLEDGE

Through eco-tourism, Wa Ale pledges to annually donate 20% of net profits and 2% of room revenues to the Lampi Foundation.

It is Wa Ale's commitment to help preserve and protect the Lampi Marine National Park under the guidance of the Myanmar government with the intention to set a precedent for future tourism projects in the Myeik Archipelago.

## CONSERVATION & GIVING BACK



Visit the "Moken" villages of Lampi Marine National Park. Learn about the incredible flora and fauna and join Wa Ale in giving back to the community during your stay.

The Lampi Foundation was founded to help fund social welfare and conservation projects in and around the Lampi Marine National Park in the Myeik Archipelago. The Foundation is funded through efforts of Wa Ale and other contributing partners; including Global Medical Volunteers, Turtle Survival Alliance and The Wildlife Conservation Society.

Working with the Wildlife Conservation Society and the Ministry of Environmental Conservation and Forestry of the Union of Myanmar; Lampi Foundation built the first sea turtle hatchery in Lampi Marine National Park to help provide a safe environment for the Green and Leatherback turtles that nest on the island of Wa Ale.

The Lampi Foundation has also provided a grant to the World Conservation Society (WCS) to implement educational seminars for three local fishing villages in the importance of saving sea turtles. The Foundation also supports and helps fund and provide training for a local medical clinic and schools in the villages of Salet Galet and May Kyone Galet. The foundation regularly provides supplies, equipment and medicine for the local inhabitants of the two villages.







## PROJECTS

### SEA TURTLE CONSERVATION

Through Lampi Foundation, Wa Ale has developed a conservation program and hatchery on the island of Wa Ale. In the past two years over 40 sea turtle nests have been protected; including Leatherback Turtles, a species thought to have disappeared from Myanmar. With over 100 baby sea turtles per nest, we have saved over 4000 sea turtles by guarding nests against poaching.

### CORAL PROTECTION

Wa Ale will be installing sea moorings for dive boats and sea vessels within the Lampi Marine National Park to help preserve coral destruction by the anchors of local fishing boats.

### LOCAL EMPLOYMENT

Wa Ale employs over 75 local people on a permanent basis, encouraging the employees to act as the stewards of Lampi Marine National Park.

### CHARITABLE DONATIONS

Through the Lampi Foundation, schools on Ma Kyone Galet and Salet Galet have been repaired and provided supplies and desks. Medical supplies have been supplied to Ma Kyone Galet's medical clinic and regular beach cleanups have been organized by Wa Ale's staff. Lampi Foundation has also provided a grant to the World Conservation Society (WCS) to implement educational seminars for three local fishing villages on the importance of saving turtles.

[www.lampifoundation.org](http://www.lampifoundation.org)





## THE FINER DETAILS

### INCLUSIONS & EXCLUSIONS

#### TENTED BEACH VILLA & TREETOP VILLAS

##### RATES INCLUDE

- Full Board - B/L/D
- Boat transfer to and from Wa Ale on SATURDAYS and TUESDAYS
- Transfer to and from Kawthaung and Ranong Airports to Kawthaung Jetty on Saturdays and Tuesdays
- House wine, beer and non-alcoholic beverages: which include sodas, juices, coffee and tea
- Internet
- Room amenities
- Non-motorized and land based activities (paddle boarding, kayaking, snorkeling, jungle hikes and cultural visits)

##### RATES EXCLUDE

- Premium Wines, Liquor and Champagne
- Scuba Diving
- In room massages
- Boat transfer outside of Saturday and Tuesday rate is US\$250 per person round trip and US\$170 per person one way (includes transport to and from Kawthaung and Ranong Airports)
- Conservation donations
- Gratuities
- VAT

#### BEACH HOUSE & BEACH BUNGALOWS

##### RATES INCLUDE

- In house dining for B/L/D
- Private butler
- Boat transfer to and from Wa Ale on SUNDAYS and WEDNESDAYS
- Transfer to and from Kawthaung and Ranong Airports to Kawthaung Jetty on Sundays and Wednesdays
- House wine, beer and non-alcoholic beverages: which includes sodas, juices, coffee and tea
- Internet
- Room amenities
- Non-motorized and land based activities (paddle boarding, kayaking, snorkeling, jungle hikes and cultural visits)

##### RATES EXCLUDE

- Premium wines; Liquor and Champagne
- Scuba Diving
- In room massages
- Boat transfer outside of the Sunday and Wednesday rate is US \$250 per person round trip and US \$170 per person one way (includes transport to and from Kawthaung and Ranong Airports)
- Conservation Donations
- Gratuities
- VAT

### GENERAL INFORMATION

#### WILD ANIMALS

Please be aware that Wa Ale is located in the Lampi Marine National Park (an ASEAN Marine Park) where the staff and guests coexist with animals indigenous to the island. Attacks by wild animals are rare. Neither Wa Ale nor their employees, can be held responsible for any injury or incident at Wa Ale or within the Lampi Marine National Park.

#### PASSPORT & VISAS

It is Wa Ale's guests responsibility to ensure that passports and visas are valid for entering Myanmar. Wa Ale and their staff cannot be held liable for obtaining visas for guests.

#### HEALTH

Tropical disease precautions should commence prior to departure. Please consult your physician or travel clinic for vaccinations relevant to Southern Myanmar. Wa Ale has a small medical clinic with a registered nurse on staff.

#### WATER

Water is supplied by a natural spring at Wa Ale and is filtered for consumption.

#### ELECTRICITY

The standard voltage in Myanmar is 230V and standard frequency is 50Hz. Wa Ale uses the same 3 prong Type G plug that is used in the United Kingdom.



## PAYMENT, TERMS & CONDITIONS AND BOOKING INFORMATION

### HOW TO BOOK

- Reservation form to be completed and sent to Wa Ale ([info@waaleresort.com](mailto:info@waaleresort.com)) together with a deposit of 25% of total reservation fee. On receipt of the signed reservation form and deposit, we will, subject to availability, reserve your stay at Wa Ale. Once you receive your confirmation invoice, your reservation is confirmed and accepted by Wa Ale.
- Final payment is due to Wa Ale no later than 5 weeks prior to arrival to Wa Ale. On receipt of your full payment, we will send you a detailed contact and information list about your reserved trip to Wa Ale.

### CANCELLATION POLICY

Cancellations are only effective on receipt of written notification and deposit. If cancellation is prior to 4 weeks before arrival to Wa Ale the deposit is refunded in full. If your cancellation is made after the due date for full payment of your trip, the percentage scale of charges apply:

- More than 4 weeks notice - Deposit refunded
- Less than 4 weeks notice - 25% of total reservation fee
- Less than 3 weeks notice - 50% of total reservation fee
- Less than 2 weeks notice - 75% of total reservation fee
- Less than 1 week notice - Full reservation fee

### PEAK SEASON (23 December – 6 January)

- More than 6 weeks notice - Deposit refunded
- More than 4 weeks notice - 50% of total reservation fee
- Less than 4 weeks notice - Full reservation fee/No refund

### CHANGE OF BOOKING

After your booking has been confirmed, should you wish to make any changes to your itinerary or wish to arrange an earlier departure, Wa Ale will make every effort to accommodate your requests based on availability. However, there may be

extra costs incurred depending upon the change of arrival and departure dates. These costs are in addition to the fee quoted for your stay. Normal cancellation fees apply if you wish to postpone your departure.

### METHODS OF PAYMENT

We accept payment via Paypal and Bank Transfers

### SEASON OPENED

Wa Ale is open from October 1 – June 1

### MINIMUM AGE

Children ages 10 and above are welcome to stay at Wa Ale Resort's Tented Villas. Children of any age are welcome to stay at Wa Ale's Private Beach House and Bungalows. Parents and guardians are responsible to monitor their children at all times during their stay.

### DISABLED FACILITIES

Wa Ale is not handicap accessible.

### INSURANCE

It is a condition of booking, that the responsibility lies with the guest to carry the correct comprehensive travel and medical insurance to cover themselves, as well as any dependants/traveling companions for the duration of their trip to Wa Ale. This insurance should include: cancellation or curtailment of the reservation, emergency evacuation expenses, medical expenses, repatriation expenses, damage/theft/loss of personal baggage, money and goods.

Wa Ale, including their representatives, employees and agents will not take responsibility for any costs, losses incurred or suffered by the guest, or guest's dependants or traveling companions, with regards to, but not limited to, any of the above mentioned situations. Guests will be charged directly by the relevant service providers for any emergency services they may require. All guests of Wa Ale will be asked to sign a liability release form upon arrival.

*To the best of our knowledge, the information on this fact sheet, our website, brochures and any publicity material is true and accurate. Any personal confidential information will be held private and not forwarded to a third party. We reserve the right to modify or change Wa Ale's terms and conditions at any time without prior notice. The content of this fact sheet is the copyright of Wa Ale, and may not be copied, reproduced, published, distributed or amended for any other purpose without our prior written consent.*



## WA ALE

t +95 9423800224

e [info@waaleresort.com](mailto:info@waaleresort.com)

96 Myananda Street, Kawthaung Township

Taninthayi Region, Myanmar

[www.waaleresort.com](http://www.waaleresort.com)