

A romantic couple is shown from the chest up, floating in a clear, dark pool. The man is on the left, looking towards the right, and the woman is on the right, leaning her head against his shoulder. The background is a lush tropical landscape with numerous tall palm trees and several thatched-roof huts. The sky is a clear, bright blue. The overall atmosphere is serene and luxurious.

# Royal Palm Beachcomber Luxury

FACTSHEET 2023-2024

A legend, a reverie.



ROYAL PALM  
BEACHCOMBER LUXURY

# Hotel features

A member of The Leading Hotels of the World.

Protected from the trade winds, the sea is fringed by a pure white sandy beach.

A unique site on the sun-drenched north-west coast of Mauritius.

Personalised service provided by a team of dedicated Artisans.

3 restaurants offering a diversity of culinary experiences led by the Executive Chef William Girard.

69 spacious, elegantly decorated Suites facing the Indian Ocean.

3 tempered swimming pool during winter.

A spectacular Royal Suite with private pool.

Royal Palm Spa in partnership with Valmont.

A spacious Fitness Centre with up-to-date equipment and professional coaches.

A weekly programme of free sports and relaxation activities

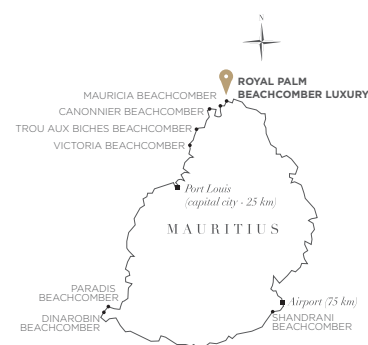
A wide range of complimentary activities organised at Ti Royal Kids Club for children aged 3 to 11 years old.

Complimentary activities organized for teens aged 12 to 17 years old.

Access to Mont Choisy Le Golf, a 18-hole golf course located 10 minutes away from the resort.

Helipad.

Dining interchangeability with all Beachcomber Hotels (upon reservation). Once at the hotel, guests have the possibility to stay in another Beachcomber property depending on availability. Supplements may be applicable according to the chosen room category. Bookings directly at hotel.





# Accommodation

## SUITES

### Junior Suite

Max Capacity **2 adults + 1 child**  
 Living Area  $\approx$  **60m<sup>2</sup>**  
 N° of Suites **27**

### Tropical Suite

Max Capacity **2 adults + 1 child**  
 Living Area  $\approx$  **85m<sup>2</sup>**  
 N° of Suites **4**

### Ocean Suite

Max Capacity **2 adults + 2 children**  
 Living Area  $\approx$  **125m<sup>2</sup>**  
 N° of Suites **21**

### Romance Suite

Max Capacity **2 adults + 1 child**  
 Living Area  $\approx$  **125m<sup>2</sup>**  
 N° of Suites **2**

### Palm Suite

Max Capacity **2 adults + 2 children**  
 Living Area  $\approx$  **105m<sup>2</sup>**  
 N° of Suites **10**

## SIGNATURE SUITES

### Penthouse

#### Ambre Island Suite

Max Capacity **2 adults + 1 child**  
 Living Area  $\approx$  **195m<sup>2</sup>**  
 N° of Suite **1**

#### Presidential Suites

##### Crystal Rock Suite

Max Capacity **Up to 4 pax. Max 4 adults.**  
 Living Area  $\approx$  **260m<sup>2</sup>**  
 N° of Suites **1**

##### Coin de Mire Suite

Max Capacity **Up to 4 pax. Max 4 adults.**  
 Living Area  $\approx$  **260m<sup>2</sup>**  
 N° of Suites **1**

##### Gabriel Island Suite

Max Capacity **Up to 4 pax. Max 4 adults.**  
 Living Area  $\approx$  **260m<sup>2</sup>**  
 N° of Suites **1**

## ROYAL SUITE

Max Capacity **Up to 4 pax. Max 4 adults.**  
 Living Area  $\approx$  **385m<sup>2</sup>**  
 N° of Suites **1**

**Various possibilities of connecting suites to accommodate families.**

## SUITES AMENITIES

**All suites are sea-facing and possess the following facilities:**

- Bathroom with separate bathtub, shower and toilet(s)
- Walk-in wardrobe
- Terrace/ Balcony
- Individual safe
- Air-conditioning
- WI-FI access
- Flat screen TV (satellite channels)
- Telephone with international direct dialling
- Fax (on request)
- Mini-bar
- Tea & coffee
- **Ambre Island Suite:** Personal butler service
- **Royal Suite & Presidential Suite:** Two separate bedrooms, two bathrooms, personal butler service

## SUITE POLICY

- 24-hour room service
- Laundry, dry-cleaning and pressing service (service charge)
- Check-in is at 2 p.m. Check-out is at noon
- Lift located next to the reception
- One room for disabled persons on request
- Sunbed allocation with respect to room category



# Highlights

## ROMANCE SUITE

- Romantic welcome in room (flowers, candles, champagne)
- An exclusive couples' Spa experience
- A dedicated corner on the beach
- Spacious Suite with direct access to the beach

## CRYSTAL ROCK SUITE, COIN DE MIRE SUITE, GABRIEL ISLAND SUITE

- A breath-taking view of the ocean
- A spacious suite; 260m<sup>2</sup> of living area, reflecting elegance and sophistication
- A large terrace featuring a lounge area, a table to enjoy alfresco meals and long chairs, facing the sea



## ROYAL SUITE

- A privileged location facing the sea
- Direct access to the beach
- Own private pool
- A unique suite of 385m<sup>2</sup> with spacious and bright spaces
- A delightful gazebo ideal for moments of relaxation

# Room Plans



Junior Suite



Tropical Suite



Ocean Suite



Romance Suite



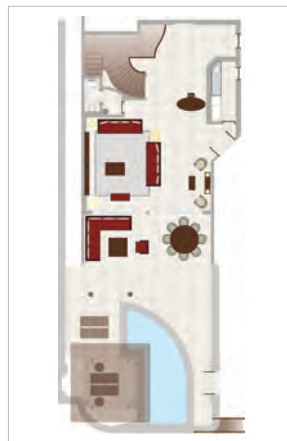
Palm Suite



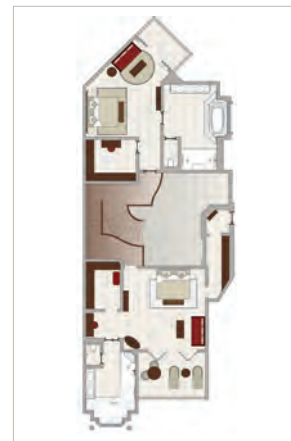
Ambre Suite



Crystal Rock Suite,  
Coin de Mire Suite,  
Gabriel Island Suite



Royal Suite - Ground Floor



Royal Suite - First Floor

# Restaurants

## LA GOÉLETTE

Signature restaurant overlooking the bay.

**Breakfast** Buffet / A la Carte 7.30 a.m. to 10.30 a.m.

**Dinner** A la Carte 7 p.m. to 10.30 p.m.

**Reservation** Recommended / **Seats** 80

## RESTAURANT LA PLAGE

Restaurant and beach bar.

Set under a magnificent badamier tree, offering guests a relaxed and casual atmosphere.

**Lunch** A la Carte 12.30 p.m. to 4 p.m. / **Seats** 70

**Reservation** Recommended

## ASIYA

Pan-Asian restaurant facing the lagoon.

**Dinner** A la Carte 7 p.m. to 10.30 p.m.  
(closed on Thursdays)

**Reservation** Recommended / **Seats** 40



# Bars

## LE BAR

Opens daily from 10 a.m.

## LE BAR PLAGE

Opens daily from 10 a.m. to 6 p.m.

## THE WINE CELLAR

Wine tasting experience according to your preferences and paired with a selection of tapas. Advance bookings required.

# Royal Grill

Signature culinary event on the beach every Thursday.

**Dinner** Buffet\* 8 p.m. to 10.30 p.m.

**Reservation** Required

\* Supplement applicable on half board.

*The Management reserves the right to close up some outlets per day throughout the year based on level of occupancy*

# Entertainment

Daily live entertainment from 7 p.m.

# Dress code

**Daytime** : swimwear or tank tops are not allowed.

**Evening as from 7 p.m.** : gentlemen are requested to wear collars, trousers and closed shoes.

**Royal Grill** : casual.



## Royal Palm Spa

### Exclusive partnership with the Swiss brand Valmont.

Extensive wellness area of 2000m<sup>2</sup> offering:

- 12 treatment rooms
- 2 wet steam baths, 2 dry steam baths
- 1 hairdressing salon (by Leonor Greyl)
- 2 beauty salons
- 1 barber shop
- 1 nail salon
- 2 changing rooms
- 2 locker rooms
- Spa Retail shop
- Outdoor plunge pool
- 1 yoga pavilion
- Bar
- Indoor/outdoor relaxing areas

## Sports & Leisure

### TENNIS

- 3 tennis courts

### FITNESS CENTRE

- 1 cardio room
- 1 multi-purpose room
- 1 Body-Building room
- 2 changing rooms

### Other sports activities available

- Table tennis
- Bocciball
- Dart Board
- 1 squash court

### PERSONAL/GROUP COACHING\*

### WATER SPORTS

- Water Skiing
- Windsurfing
- Kayaking
- Sailing
- Glass bottom boat
- Snorkelling
- Stand-Up Paddle
- Wakeboarding
- Scuba Diving\*
- Private boats excursions\*

\*Activities involving cost



## Teens

- Free activity programme for teenagers aged 12-17

# Ti Royal

- Housed in a spacious facility dedicated to children aged 3 to 11.
- Opening hours from 9 a.m. to 11 p.m.
- A Babysitting service available on request with supplement (24-hour notice required).

## BABY CARE AMENITIES

Upon request.

## Practical Information

Concierge - Boutique - WI-FI/ADSL access -  
Limousine & helicopter transfers - Doctor on call -  
PressReader - House florist - Courtesy rooms (according to  
availability) - Cigar lounge

## CREDIT CARDS

American Express, Visa, Mastercard, Diners. Personal and  
travellers cheques are not accepted.

## NON-SMOKING POLICY

All our rooms and covered public areas within the hotel  
premises are non-smoking as per local regulations.

