



Galé
Algarve, Portugal

A design-forward
boho-chic villa just
steps from the sand

👤 12 guests

🛏️ 5 + 1 bedrooms

🚿 6 + 1 bathrooms

📏 650 m²

VILA  VITA
Collection
ALGARVE



LOCATION

Villa Hibiscus Beach House enjoys one of the most privileged locations in the Algarve, positioned directly on the gorgeous Galé beach, on the outskirts of a peaceful nature reserve.

While the villa is cocooned from the outside world, the bars, boutiques and restaurants of Albufeira and Guia are within easy reach, meaning you can fully enjoy the local Algarve lifestyle.

There is a great variety of local restaurant options from casual to fine dining, including the world-famous piri-piri chicken from Guia, a must for all visitors.

DESCRIPTION

The light-filled villa features in the same level five beautiful beach themed bedrooms, all with private bathrooms, a fully equipped kitchen with the latest state-of-the-art appliances, and a spacious living and dining area leading directly onto a fully furnished shaded terrace.

A sixth double bedroom with en-suite shower room can be found on a lower level, accessible through the garden and not directly connected to the main house, this space allows the utmost privacy while still offering full access to the remaining facilities.

Sun lovers can enjoy the private pool and a carefully designed gated garden, with direct access to the beach and stunning ocean views.

FACILITIES

- 1 master bedroom with king-size bed and en-suite bathroom
- 1 bedroom with king-size bed and en-suite bathroom
- 4 bedrooms with king-size bed and en-suite shower
- 1 guest shower room
- Living/dining room
- Fireplace
- Flat TVs
- Fully equipped kitchen
- Laundry
- Air conditioning
- Terrace
- Swimming pool
- Sun loungers
- AI fresco dining
- Barbeque
- Alarm system
- Parking at the property

AMENITIES

- Daily American style breakfast
- Welcome hamper
- Complimentary toiletries
- Daily housekeeping services
- Changing of towels and linen twice a week
- Wireless Internet access
- Pool heating
- Bicycles
- Access to the facilities of Vila Vita Parc resort*

*12 Restaurants, Spa by Sisley Paris, sports and leisure, excluding Creche and Kids Club

SERVICES AT EXTRA COST

- Villa pre-stocking
- Chef
- Airport transfer
- Private driver
- Activities
- Excursions

DISTANCES

- Direct access to Galé beach
- 2,9 km to Salgados beach
- 3,5 km to Evaristo beach
- 9 km to Armação de Pêra
- 11 km to Algarve Shopping
- 5 km to Albufeira centre
- 23 km to Silves Castle
- 48 km to Faro airport
- 270 km to Lisbon airport

VILLA POLICIES

- Non-smoking villa
- Children are welcome
- Social events permitted*
- Additional bedding available*
- Pets*
- Check in: 4:00PM
- Check out: 10:00AM

*upon request & at additional cost





- | | | | | |
|----------------------|------------------------|---------|----------------------|--------------|
| Bedroom | Bathroom / Shower room | Kitchen | Living / Dining room | Laundry room |
| Stairs / Common area | Terrace | Pool | Garden | Garage |



VILLA HIBISCUS GALÉ

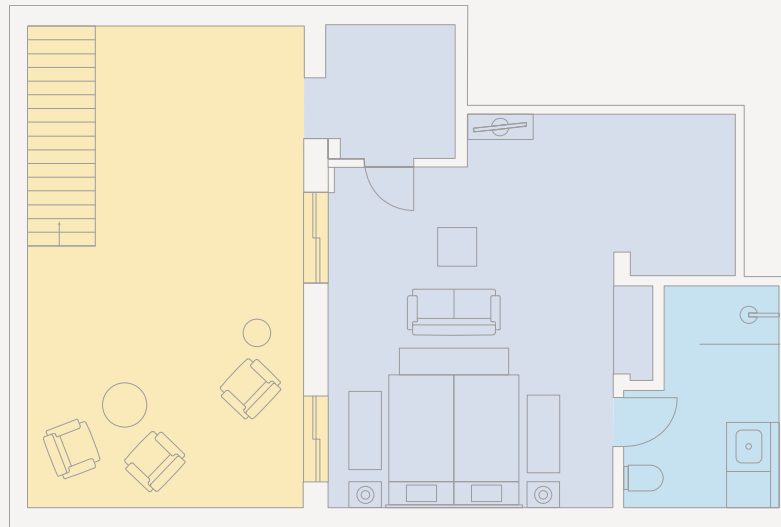
GROUND FLOOR

- 2 king-size bedrooms with en-suite bathrooms
- 3 king-size bedrooms with en-suite shower room
- 1 guest shower room
- 1 living/ dining area
- 1 fully equipped kitchen
 - Barbecue
 - Laundry room
 - Terrace
 - Pool
 - Beach Access





VILLA HIBISCUS
GALÉ



LOWER FLOOR

1 king-size bedroom
with en-suite shower room

Lounge area

Bedroom

Bathroom / Shower room

Stairs / Common area



GUIA

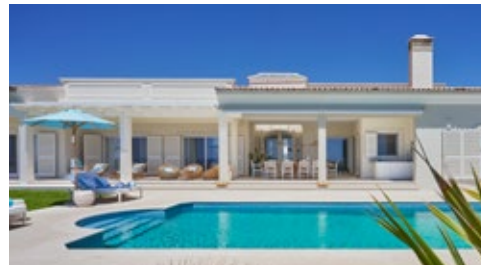


CASA ROSA DOS VENTOS

Country style charm

4 guests | 2 bedrooms | 2 shower rooms | 135 m²

GALE



VILLA HIBISCUS BEACH HOUSE

A boho-chic villa on the sand

12 guests | 5 + 1 bedrooms | 6 + 1 bathrooms | 650 m²

SALEMA



VILLA MAR À VISTA

Beach serenity with a view

8 guests | 4 bedrooms | 3 bathrooms | 248 m²

SALEMA



VILLA MAR AZUL

Contemporary style in a pinch-yourself setting

12 guests | 6 bedrooms | 7 bathrooms | 540 m²

ARMAÇÃO DE PÊRA

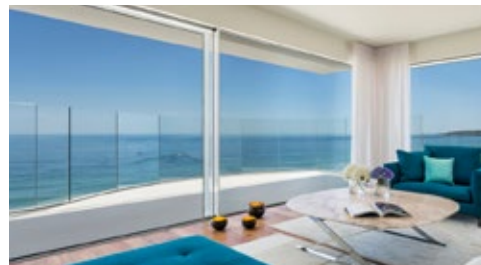


RED CHALET

The charm of tradition

8 guests | 2 + 2 bedrooms | 3 + 2 bathrooms | 260 + 122 m²

SALEMA



VILLA ALEGRIA

Contemporary and sophisticated

8 guests | 4 bedrooms | 5 bathrooms | 600 m²

SALEMA

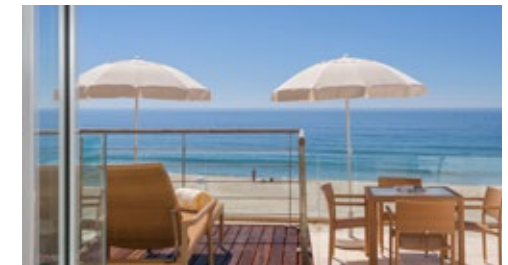


RESIDENCE SOL E MAR

Townhouse on the beach

4 guests | 2 bedrooms | 2 bathrooms | 184 m²

SALEMA



RESIDENCE ESTRELA DO MAR

Redesigned fishermen's townhouse

4 guests | 2 bedrooms | 3 bathrooms | 151 m²

Managed by Vila Vita Parc

Rua Anneliese Pohl, Alporchinhos · 8400-450 · Porches · Portugal

+351 282 320 156 · +351 282 310 100 · villas@vilavitaparc.com · @vilavitacollection

vilavitacollection.com