



EST. 1908

RED CHALET



ARMAÇÃO DE PÊRA  
ALGARVE, PORTUGAL

## The Charm of Tradition

 8 guests

 2+2 bedrooms

 3 + 2 bathrooms

 260 + 122 m<sup>2</sup>

VILA  VITA

# Collection

ALGARVE



## LOCATION

Located in the heart of the traditional fishing village of Armação de Pêra, the Red Chalet was built on the turn of the 20th century, inspired by the opulent luxury of the Belle Époque era with direct access to the beach and the historical town centre.

## DESCRIPTION

This gated property comprises 1.100 m2 with two different buildings, the Red Chalet and the White house, a large seawall terrace and garden with private outdoor heatable swimming pool, a wellness area and direct access to the beach.

### RED CHALET - MAIN HOUSE

Bridging the gap between the comforts of the present and the romance of the past, the large open kitchen opens into a living and dining area with a large terracotta terrace and spectacular seafront setting. The charming staircase leads to two en-suite bedrooms and a living room where a balcony makes the most of the breathtaking views.

### WHITE HOUSE

White-washed wooden floors and details in splashes of colour are recreated throughout the more contemporary annex with a fresh airy feel and a relaxed, effortless style, perfect for younger members of a family looking for their own space. It offers a duplex suite with ensuite bathroom and terrace on the upper floor and a living room downstairs, it also features, from a separate entrance, a studio with an open space kitchenette and living room, as well as a queen-size bedroom with en-suite shower room and sea views.

## FACILITIES

### RED CHALET

- 2 bedrooms with king-size bed, en-suite bathroom and walk-in closet
- 3 living rooms
- 1 fully equipped kitchen with dining room
- Wine fridge
- 1 guest toilet
- Air conditioning
- Balcony

### WHITE HOUSE

Duplex Suite:

- 1 bedroom with king-size bed and en-suite bathroom
- 1 living room
- Air conditioning
- Balcony with sun loungers

Studio:

- 1 bedroom with queen-size bed and en-suite shower room
- 1 living room with kitchenette
- Air conditioning

### OUTDOOR AREAS

- Swimming pool
- Deck with sun loungers
- Sauna and massage room
- Sea front terrace
- Barbecue
- Al-fresco dining with 10 seats
- Fire pit
- Alarm system
- Parking at the property

## AMENITIES

- Daily American style breakfast
- Welcome hamper
- Complimentary toiletries

- Daily housekeeping services
- Changing of towels and linen twice a week
- Wireless Internet access
- Pool heating
- Access to the facilities of Vila Vita Parc resort\*

\* 12 Restaurants, Spa by Sisley Paris, sports and leisure, excluding Creche and Kids Club

## SERVICES AT EXTRA COST

- Villa pre-stocking
- Chef
- Airport transfer
- Private driver
- Activities

## DISTANCES

- Direct access to Armação de Pêra beach and town
- 10 km to Benagil beach and cave
- 11 km to Algarve shopping centre
- 15 km to Albufeira centre
- 53 km to Faro airport
- 260 km to Lisbon airport

## VILLA POLICIES

- Non-smoking villa
- Children are welcome
- Social events permitted\*
- Additional bedding available\*
- Pets\*
- Check in: 4:00PM
- Check out: 10:00AM

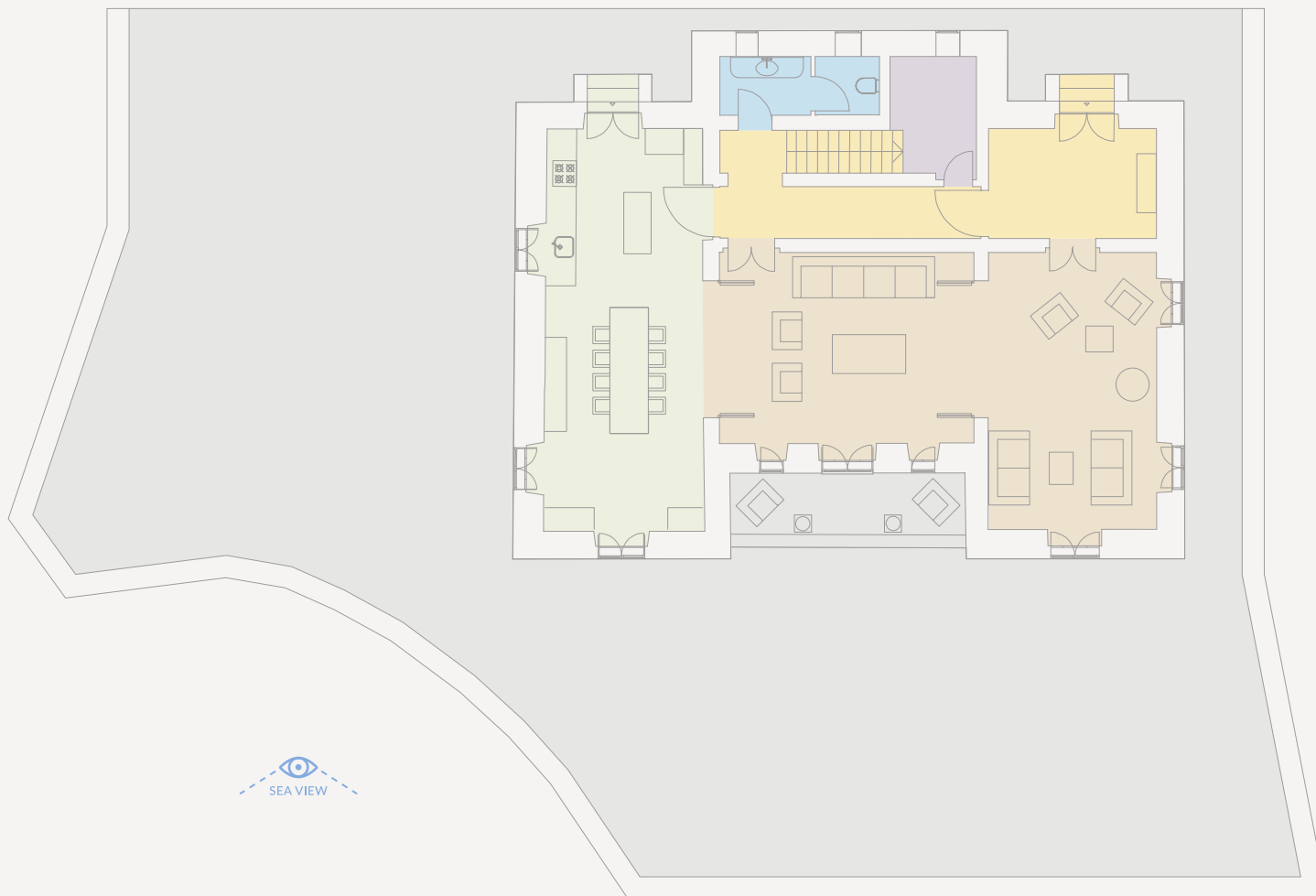
\*upon request & at additional cost

Know more  
about Red Chalet





**RED CHALET**  
ARMAÇÃO DE PÊRA



**MAIN HOUSE**  
**GROUND FLOOR**

- 1 dining room
- 2 living rooms
- 1 fully equipped kitchen
- 1 guest toilet

- Guest toilet
- Kitchen / Dining room
- Living room
- Storage
- Stairs / Common area
- Private terrace



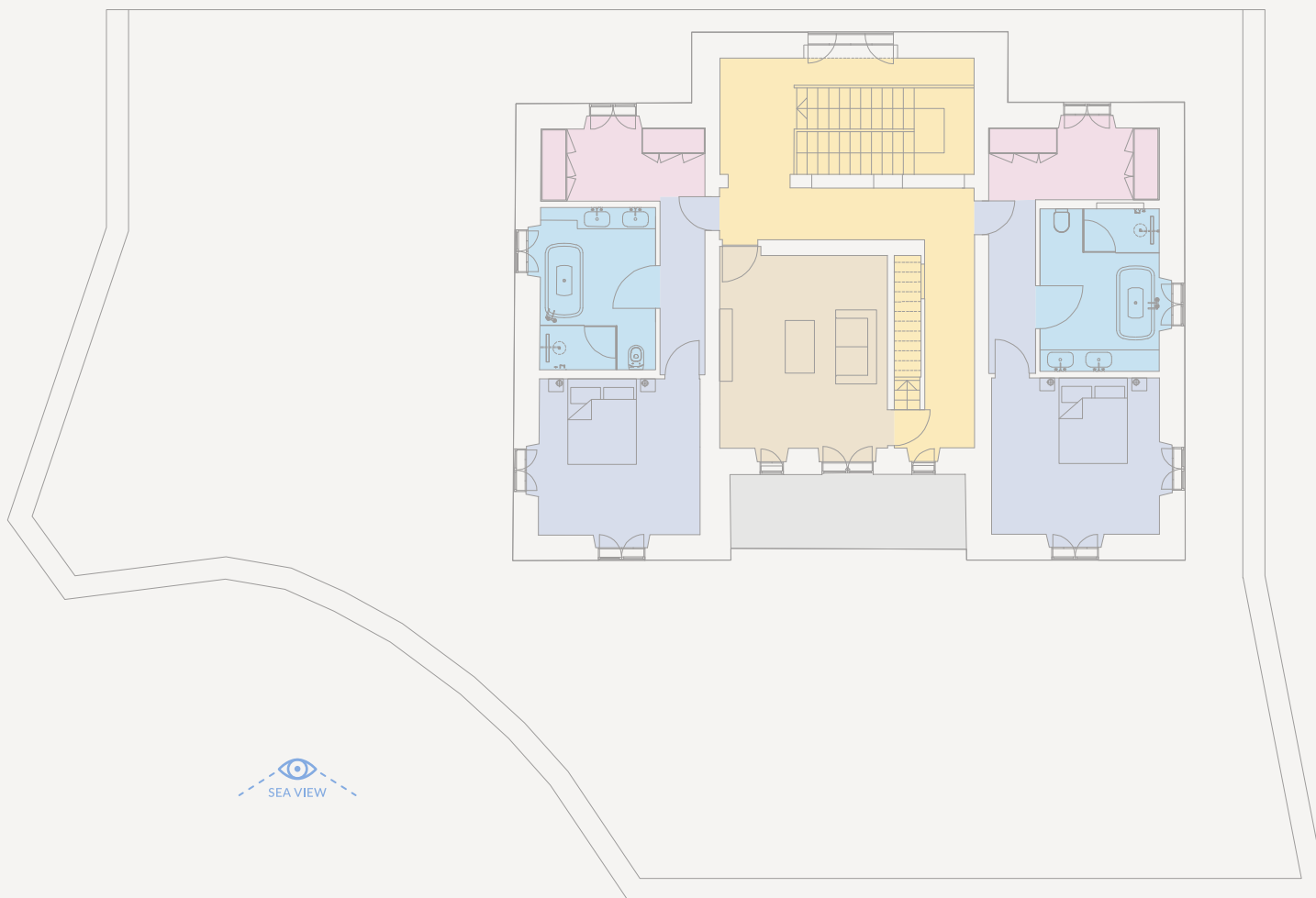


**RED CHALET**  
ARMAÇÃO DE PÊRA

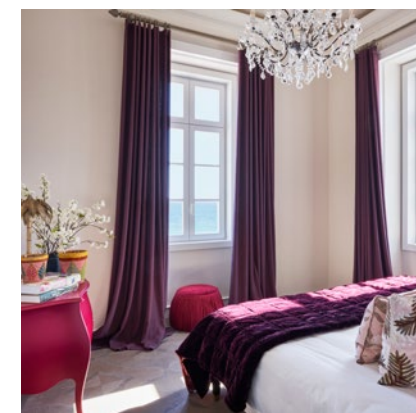
**MAIN HOUSE**  
**UPPER FLOOR**

2 bedrooms with en-suite bathroom  
and walk-in closet

1 living room



- Bedroom
- Bathroom / Shower room
- Stairs / Common area
- Closet
- Living room
- Balcony

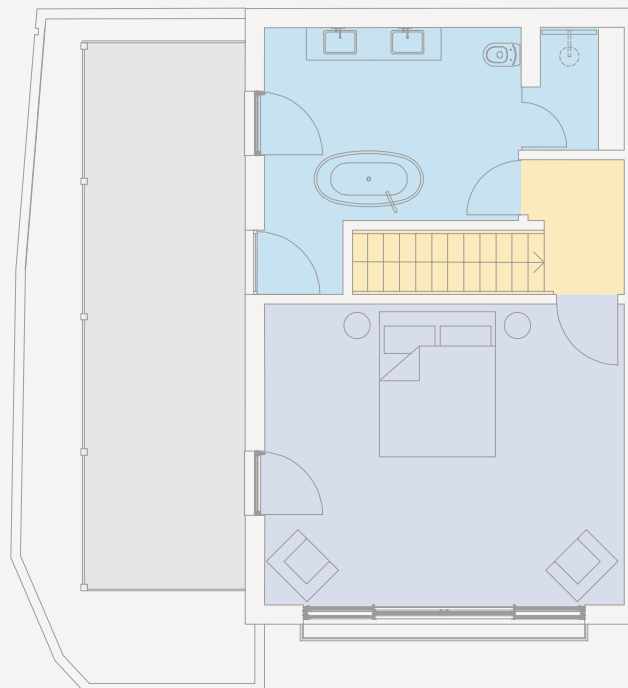
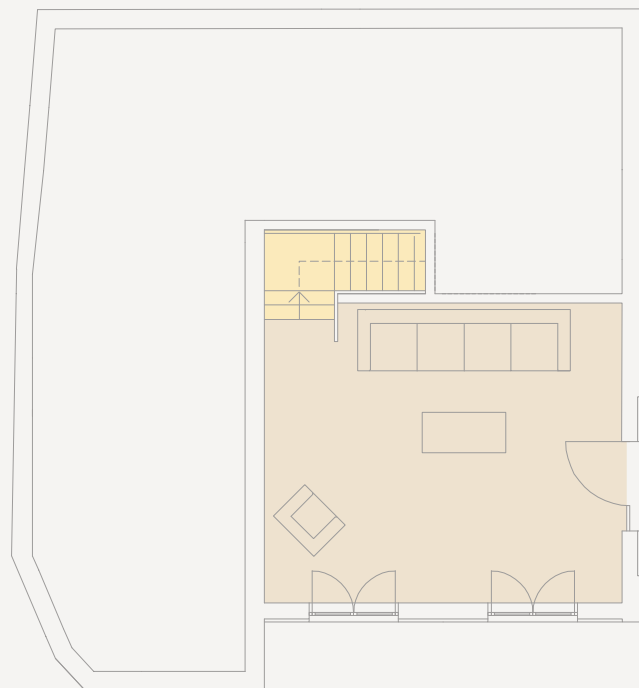




RED CHALET  
ARMAÇÃO DE PÊRA

GROUND FLOOR

UPPER FLOOR



WHITE HOUSE  
DUPLEX SUITE

- 1 bedroom with en-suite bathroom
- 1 living room
- Balcony

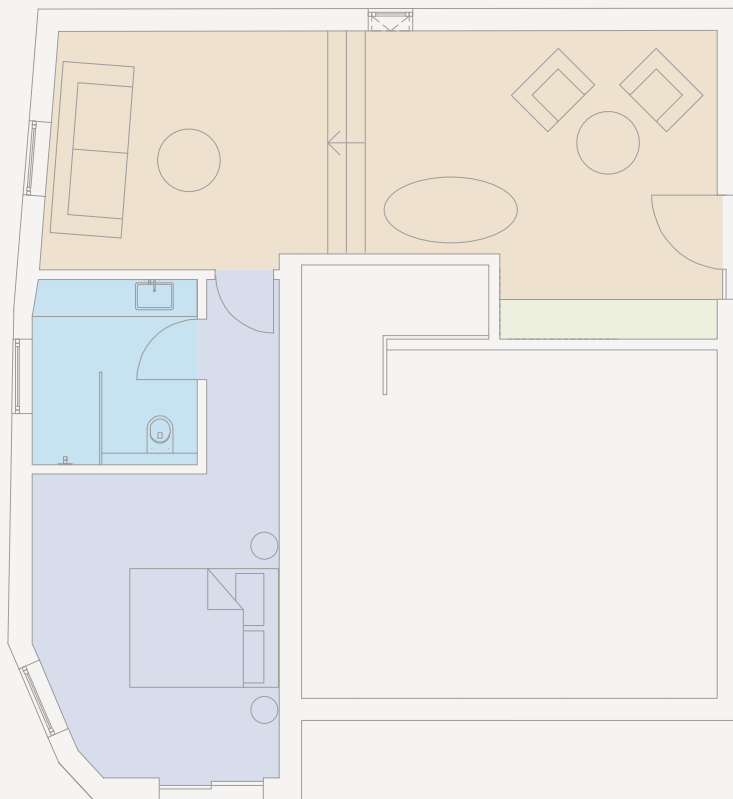


- Bedroom
- Bathroom / Shower room
- Living Room
- Stairs / Common area
- Balcony





**RED CHALET**  
ARMAÇÃO DE PÊRA



## WHITE HOUSE STUDIO

1 bedroom with en-suite shower room

1 living room

Kitchenette

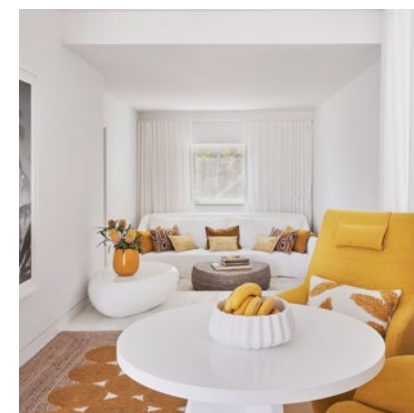


Bedroom

Shower room

Kitchenette

Living room

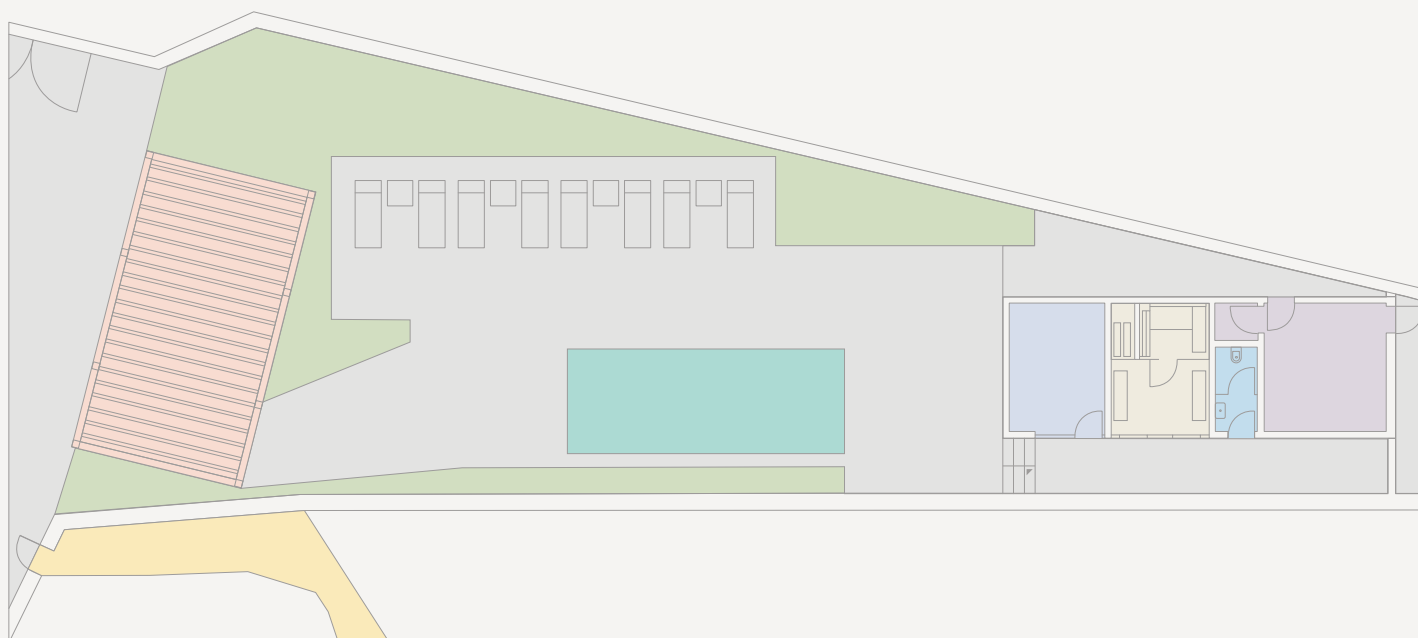




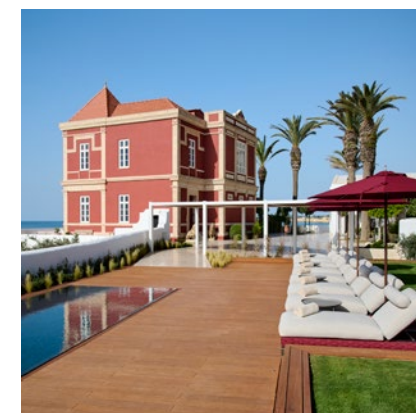
RED CHALET  
ARMAÇÃO DE PÊRA

## OUTDOOR AREA

- Pool area
- Sun deck
- Sauna
- Treatment room
- Guest toilet
- Storage
- Carport
- Beach access



- |                |              |       |         |              |
|----------------|--------------|-------|---------|--------------|
| Treatment room | Guest toilet | Sauna | Storage | Beach access |
| Sun deck       | Garden       | Pool  | Carport |              |



GUIA



CASA ROSA DOS VENTOS

Country style charm

4 guests | 2 bedrooms | 2 shower rooms | 135 m<sup>2</sup>

GALE



VILLA HIBISCUS BEACH HOUSE

A boho-chic villa on the sand

12 guests | 5 + 1 bedrooms | 6 + 1 bathrooms | 650 m<sup>2</sup>

SALEMA



VILLA MAR À VISTA

Beach serenity with a view

8 guests | 4 bedrooms | 3 bathrooms | 248 m<sup>2</sup>

SALEMA



VILLA MAR AZUL

Contemporary style in a pinch-yourself setting

12 guests | 6 bedrooms | 7 bathrooms | 540 m<sup>2</sup>

ARMAÇÃO DE PÊRA



RED CHALET

The charm of tradition

8 guests | 2 + 2 bedrooms | 3 + 2 bathrooms | 260 + 122 m<sup>2</sup>

SALEMA



VILLA ALEGRIA

Contemporary and sophisticated

8 guests | 4 bedrooms | 5 bathrooms | 600 m<sup>2</sup>

SALEMA

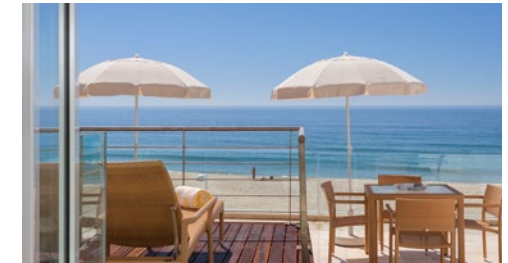


RESIDENCE SOL E MAR

Townhouse on the beach

4 guests | 2 bedrooms | 2 bathrooms | 184 m<sup>2</sup>

SALEMA



RESIDENCE ESTRELA DO MAR

Redesigned fishermen's townhouse

4 guests | 2 bedrooms | 3 bathrooms | 151 m<sup>2</sup>

Managed by Vila Vita Parc

Rua Anneliese Pohl, Alporchinhos · 8400-450 · Porches · Portugal

+351 282 320 156 · +351 282 310 100 · villas@vilavitaparc.com · @vilavitacollection

[vilavitacollection.com](http://vilavitacollection.com)